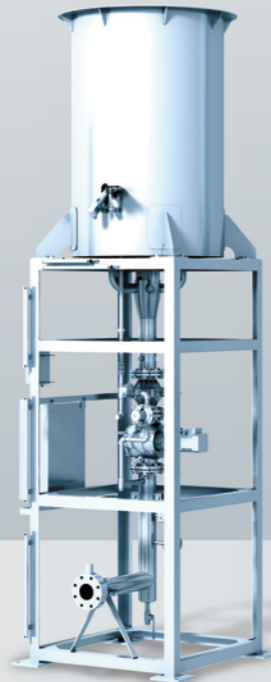


Low temperature flares – Combustion of biogases,
sewage gases and synthetic gases

Various types and sizes

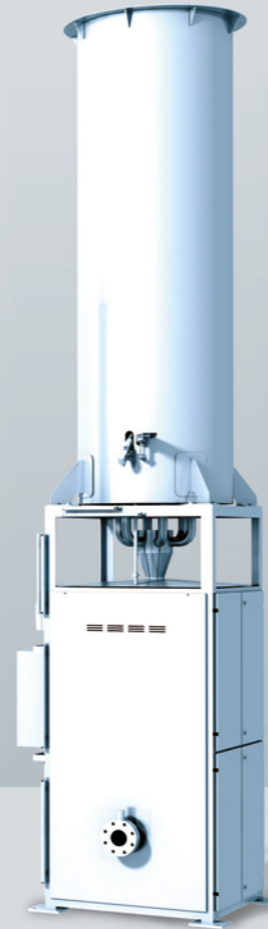


Smart flare LCN



NTO* flare
here: without housing

*NTO = open, visible combustion



NTV* flare
here: with housing

*NTV = covered combustion

Unbeatable
price/performance ratio

SMART flares, the light variant for retrofitting

Design size	Gas quantity	Combustion capacity	Electr. combined heat & power plant	Gas connection
(Type)	Q [Nm ³ /h], single stage	P [kW] at 55 vol.% CH ₄	P [kW] at η=40%	
LCN 0,4	approx. 20 to 70	approx. 110 to 400	approx. 160	DN 40
LCN 0,8	approx. 40 to 145	approx. 220 to 800	approx. 320	DN 50
LCN 1,2	approx. 55 to 220	approx. 300 to 1,200	approx. 480	DN 65
LCN 1,6	approx. 75 to 290	approx. 400 to 1,600	approx. 640	DN 80
LCN 2,0	approx. 90 to 365	approx. 500 to 2,000	approx. 800	DN 80

NT flares, the professional variant for all applications

Design size	Gas quantity	Combustion capacity	Electr. combined heat & power plant	Gas connection
(Type)	Q [Nm ³ /h], single stage	P [kW] at 55 vol.% CH ₄	P [kW] at η=40%	
NTO, NTV 0,4	approx. 20 to 70	approx. 110 to 400	approx. 160	DN 40
NTO, NTV 0,8	approx. 40 to 145	approx. 220 to 800	approx. 320	DN 50
NTO, NTV 1,2	approx. 55 to 220	approx. 300 to 1,200	approx. 480	DN 65
NTO, NTV 1,6	approx. 75 to 290	approx. 400 to 1,600	approx. 640	DN 80
NTO, NTV 2,0	approx. 90 to 365	approx. 500 to 2,000	approx. 800	DN 80
NTO, NTV 2,4	approx. 110 to 440	approx. 600 to 2,400	approx. 960	DN 100
NTO, NTV 2,8	approx. 130 to 510	approx. 700 to 2,800	approx. 1,120	DN 100
NTO, NTV 3,2	approx. 145 to 580	approx. 800 to 3,200	approx. 1,280	DN 100
NTO, NTV 3,6	approx. 165 to 655	approx. 900 to 3,600	approx. 1,440	DN 100
NTO, NTV 4,0	approx. 181 to 725	approx. 1,000 to 4,000	approx. 1,600	DN 125
NTO, NTV 4,4	approx. 200 to 800	approx. 1,100 to 4,400	approx. 1,760	DN 125
NTO, NTV 4,8	approx. 220 to 870	approx. 1,250 to 4,800	approx. 1,920	DN 150
NTO, NTV 5,2	approx. 236 to 945	approx. 1,250 to 5,200	approx. 2,080	DN 150
NTO, NTV 5,6	approx. 255 to 1,020	approx. 1,250 to 5,600	approx. 2,240	DN 150
NTO, NTV 6,0	approx. 275 to 1,100	approx. 1,500 to 6,000	approx. 2,400	DN 150

Other sizes on request.
We reserve the right to make technical modifications.

Professional design at a good price

The C-nox low temperature flares are distinguished by their simple and robust construction. The maintenance and operating costs have therefore been reduced to a minimum. Exclusively high quality components are used which fulfil all technical safety requirements (e.g. ATEX, DIN EN 746-2, DIN EN 298). Thanks to the modular system, the most economical solution is available for every application. Design examples for all biogases, sewage gases or synthetic gases for combustion temperatures of up to 850°C:

- Visible or covered combustion
- With or without pressure booster ventilator (compressor)
- Installation on a foundation or container roof
- Support gas burner
- Bivalent applications (separate gas feeds)
- Multi-level
- Winter package with housing and electric heating
- In conformity with guidelines by the German Commission of Process Safety (KAS) and the technical circular on protection against air pollution (TA Luft)
- Commissioning as well as maintenance and service





C-nox is a trademark of Medax GmbH & Co. KG

Haberstraße 23 · D-24537 Neumünster · Tél.: 04321-85199-0 · Fax: 04321-85199-10 · E-mail: sales@c-nox.de
www.c-nox.de